

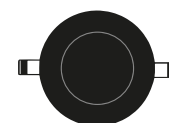
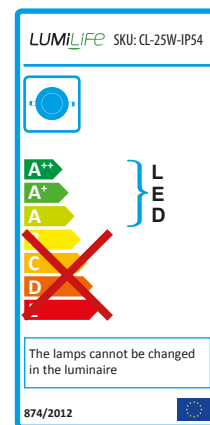
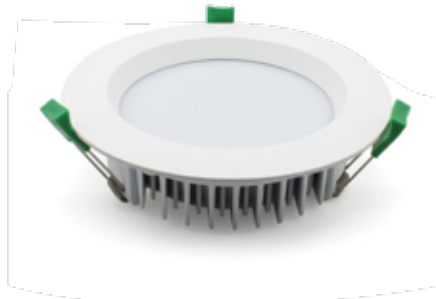
LED

25W Downlight

This LUMiLiFE 25W LED downlight offers up to 2000 lumens of extra-bright light and a wide 90° beam angle, which makes it ideal for commercial and office applications. It features a PMMA diffuser that helps reduce starkness to produce an even and soft light.

You and your business will also enjoy huge savings of up to 70% when replacing standard lighting equivalents, with maintenance costs dramatically reduced thanks to a 40,000hr lifespan.

Friendly to the environment and completely mercury-free, you don't have to worry about hazardous chemicals. It also has an IP54 protection rating, so it's protected against dust and splashing water.



Ø170 x 45mm
cutout - Ø140 x 150mm

Technical Information

Model	Wattage	Colour	CCT	Dimmable	ErP Lumens	Power factor	CRI	Beam Angle	Current
CL-25W-IP54-WW	25W	Warm White	3000K	YES	1800	≥0.9	≥80	90°	700mA
CL-25W-IP54-DL	25W	Daylight	4000K	YES	1850	≥0.9	≥80	90°	700mA
CL-25W-IP54-CW	25W	Cool White	5700K	YES	2000	≥0.9	≥80	90°	700mA

Common attributes

IP Rating	IP54
Lifespan	40000 hours
Input power	AC230V
Frequency	50Hz
Input voltage	AC200-240V
Efficiency	≥85%
Total load wattage	25W±5%
Input current	≤0.09A
Output current range	700mA±5%
Power tolerance	±5%
Dimmer (Triac + Switch)	8%-100%
Transformer	Triac
Short-circuit protection	PASS
Over voltage protection	PASS
Over temperature protection	PASS
Withstand voltage	AC3750V

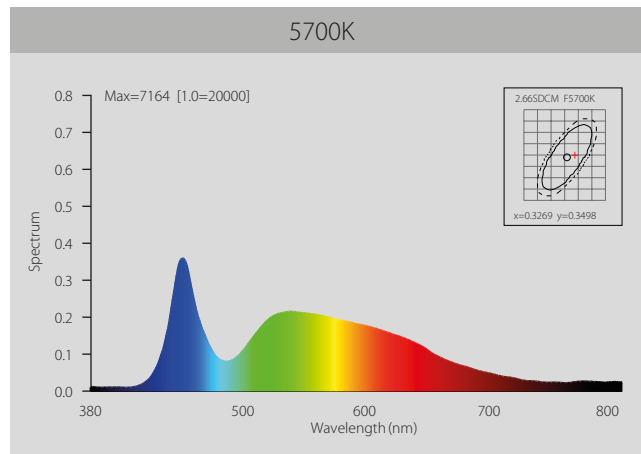
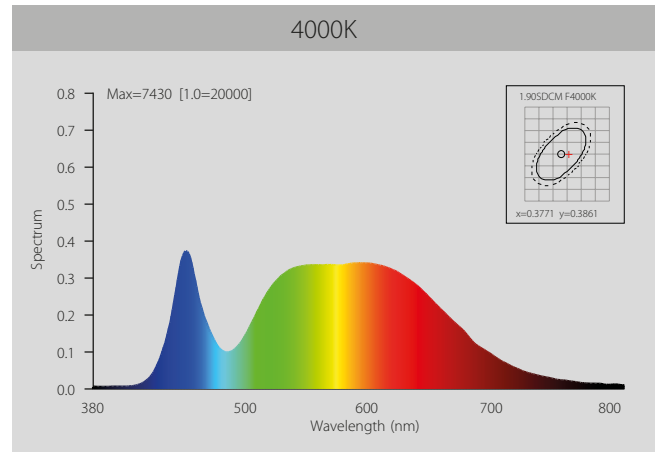
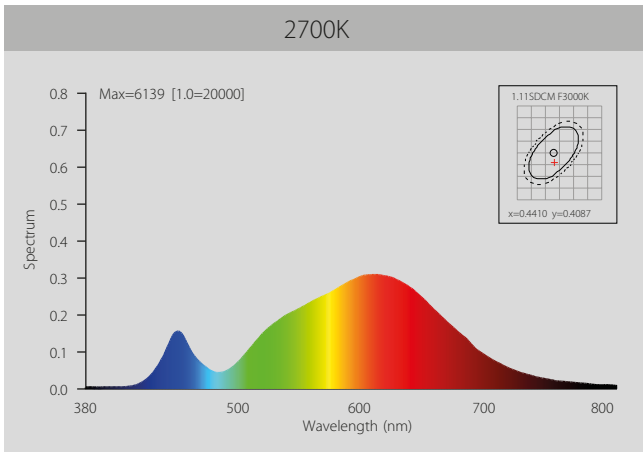
Compliance

- ✓ BS 4533-102.1:1990, EN 60598-2-1:1989: *Luminaires. Particular requirements. Specification for fixed general purpose luminaires.*
- ✓ BS EN 60598-1:2008: *Luminaires. General requirements and tests.*
- ✓ BS EN 62493:2010: *Assessment of lighting equipment related to human exposure to electromagnetic fields.*
- ✓ BS EN 62471:2008: *Photobiological safety of lamps and lamp systems.*
- ✓ BS EN 50413:2008+A1:2013: *Basic standard on measurement and calculation procedures for human exposure to electric, magnetic and electromagnetic fields (0 Hz - 300 GHz).*
- ✓ BS EN 55015:2013+A1:2015: *Limits and methods of measurement of radio disturbance characteristics of electrical lighting and similar equipment.*
- ✓ BS EN 61547:2009: *Equipment for general lighting purposes. EMC immunity requirements*
- ✓ BS EN 61000-3-2:2006+A2:2009: *Electromagnetic compatibility (EMC). Limits. Limits for harmonic current emissions (equipment input current ≤ 16 A per phase).*
- ✓ BS EN 61000-3-3:2013: *Electromagnetic compatibility (EMC). Limits. Limitation of voltage changes, voltage fluctuations and flicker in public low-voltage supply systems, for equipment with rated current ≤ 16 A per phase and not subject to conditional connection.*

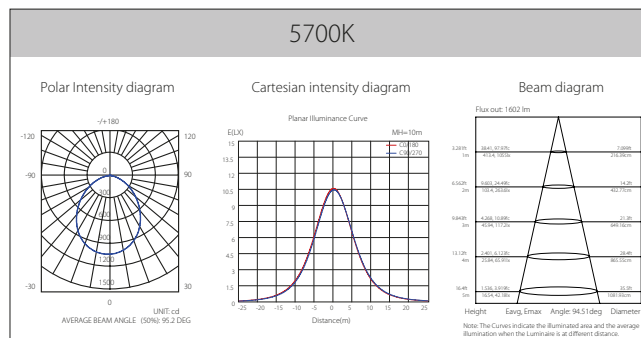
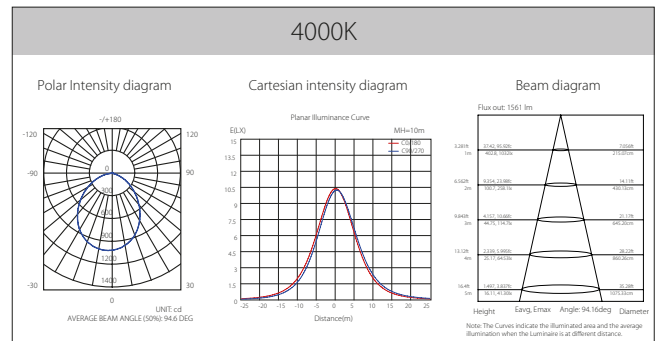
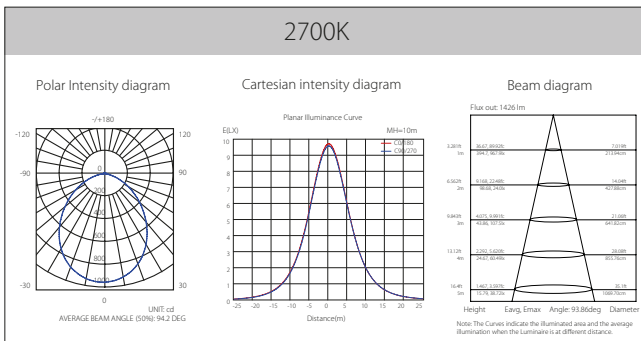
 Designed for
LUMiLiFE Great Britain



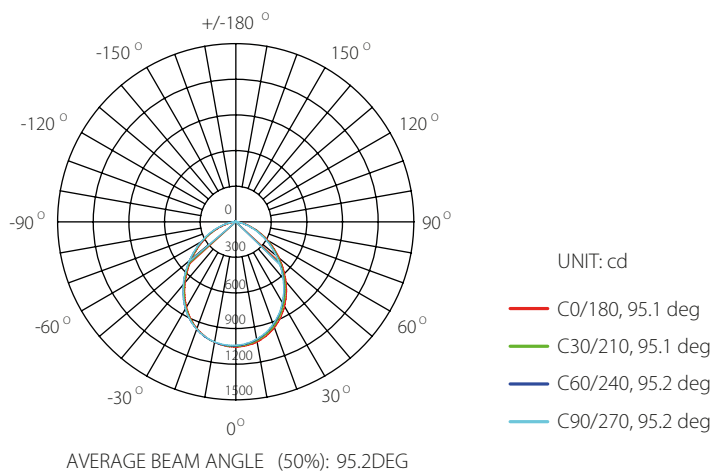
Spectral Diagram



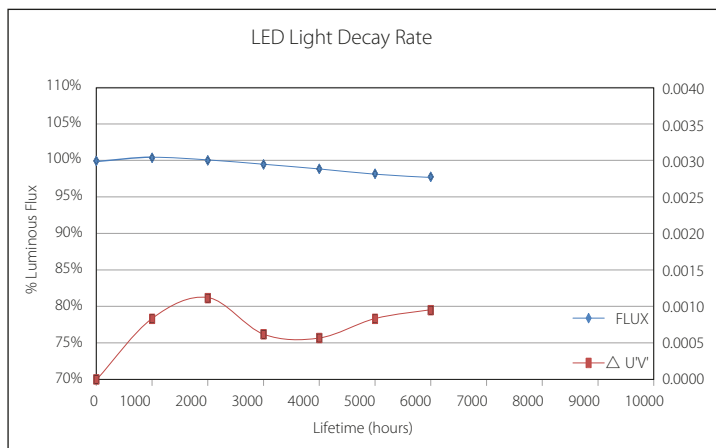
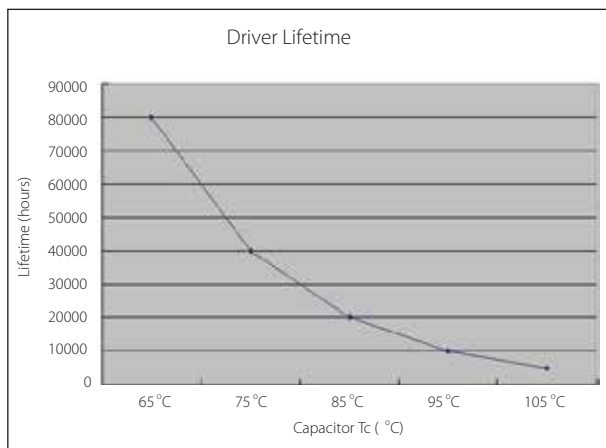
Photometric Diagram



Polar Diagram Comparison

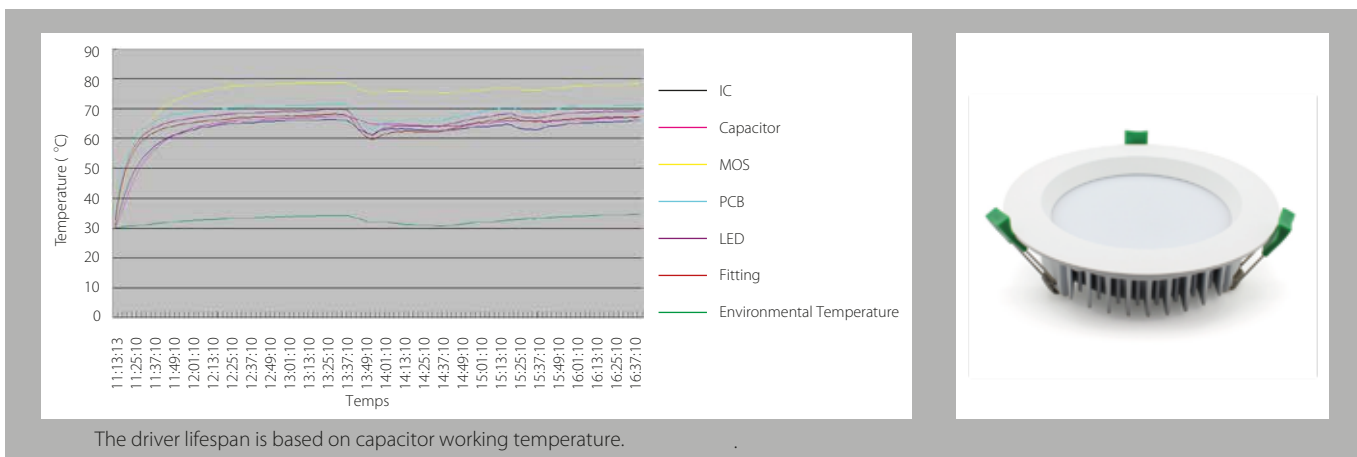


Driver lifetime & LED light decay rate



Temperature

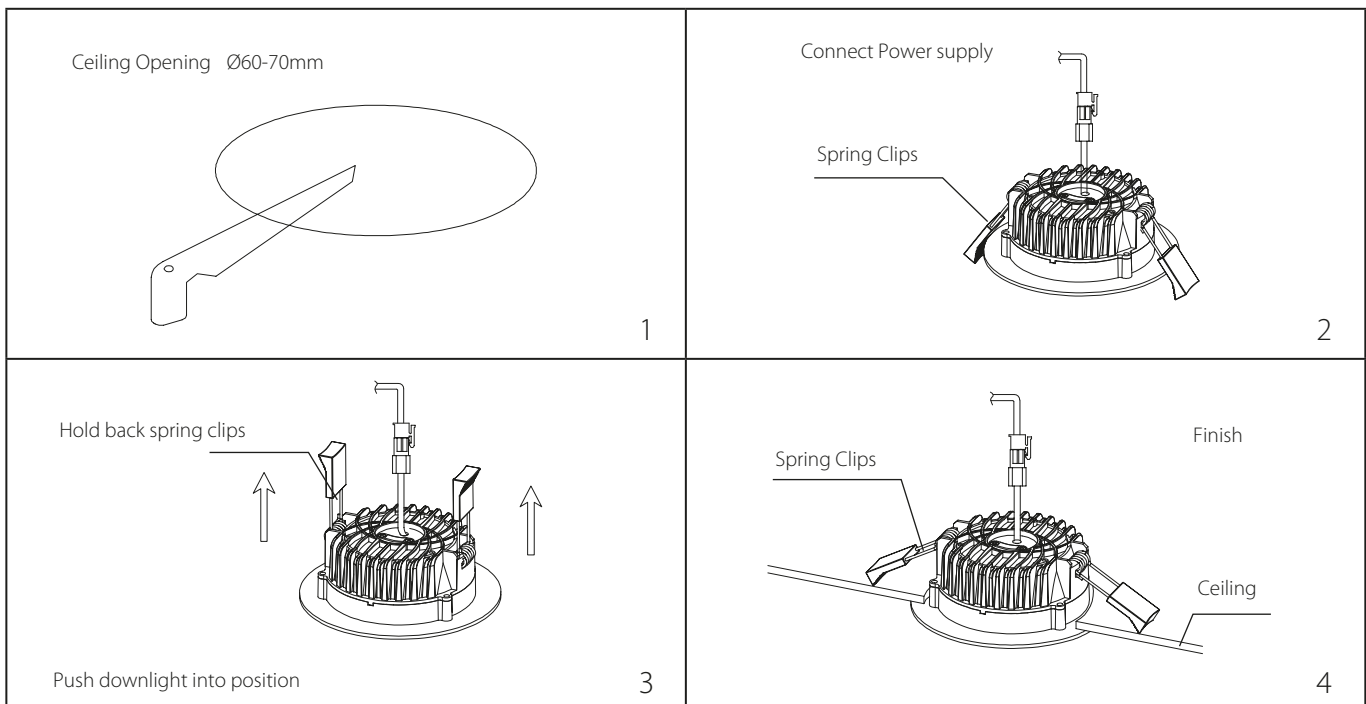
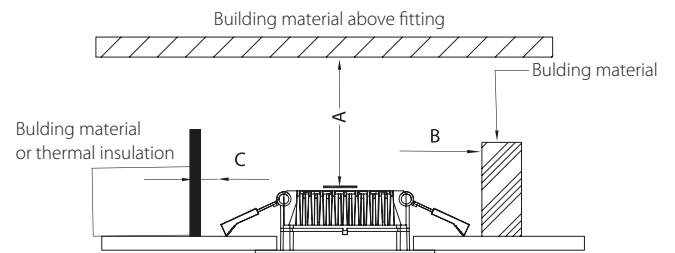
- The testing is operated at 25°C
- The lifetime of capacitor, minimum of 5,000 hours if operated at 105°C, will be doubled whenever the temperature drops 10°C
- The highest withstand temperature of IC, MOS could be 120°C
- The highest withstand temperature of LED junction temperature is 150°C



Installation

Install requirements

A - Gap above the fitting	25mm
B - Gap to the building material	25mm
C - Gap to the thermal	25mm



LUMiLiFe is constantly developing and improving its products. For this reason, all product descriptions are intended as a general guide and we may change specifications time to time in the interest of product development, without prior notification or public announcement. Data in this sheet has been obtained in controlled experimental conditions. However, LUMiLiFe cannot accept any liability arising from the reliance on such data to the extent permitted by law.