

## PACKAGING SPECIFICATION TYPHOO 80 DECAF (x6)

DOC REF: TYPTR80290 // S30930

Date: 2<sup>nd</sup> March 2026

Version: 2

Page(s) - 1 of 3

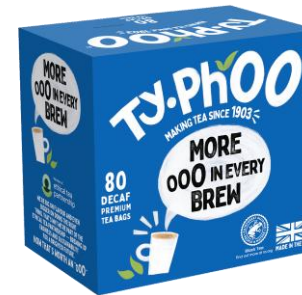
Issued by: Peter Spence

Reason for change: New Artwork

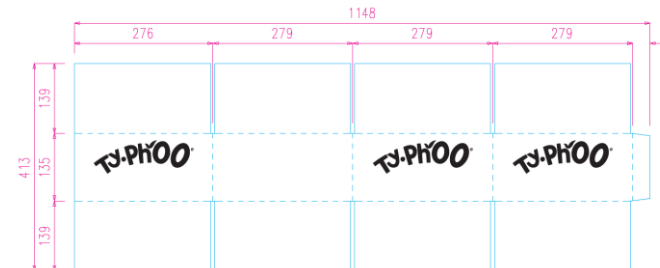
### PRODUCT INFORMATION:

<b>CSN:</b>	TYPTR80290
<b>S-CODE:</b>	S30930
<b>DESCRIPTION:</b>	TYPHOO 80 DECAF (x6)
<b>SINGLE UNIT NET WEIGHT:</b>	250g (3.125g fill weight)
<b>SINGLE UNIT DIMENSIONS:</b>	L 136mm x W 88mm x H 125mm
<b>SINGLE UNIT GROSS WEIGHT:</b>	299.5g
<b>SHELF LIFE:</b>	Carton BBE Dual code 36 Months: Julian / Outer Production Code BBE Code: 36 MONTHS : Julian
<b>OUTER BARCODE:</b>	ITF: 15055486000633
<b>PACK BARCODE:</b>	EAN: 5060123602333

### SINGLE UNIT RENDER:



### OUTER ARTWORK:



## PACKAGING SPECIFICATION TYPHOO 80 DECAF (x6)

DOC REF: TYPTR80290 // S30930

Date: 2<sup>nd</sup> March 2026

Version: 2

Page(s) - 2 of 3

Issued by: Peter Spence

Reason for change: New Artwork

### PACKING METHOD:

80 TEABAGS PER CARTON FRONT FACE AND SEALED WITH ADHESIVE. 6 CARTONS PER SRP AND SEALED WITH ADHESIVE. STRETCHWRAP PLUS 1 PALLET LABEL.

### OUTER & PALLET:

OUTER NET WEIGHT:	1.500kg
OUTER GROSS WEIGHT:	1.985kg
OUTER DIMENSIONS:	L 279mm x W 276mm x H 135mm
PALLET NET WEIGHT:	216kg
PALLET GROSS WEIGHT:	313.9kg (including CHEP)
LOADED PALLET DIMENSIONS:	L 1200 mm x W 1000 mm X H 1758mm
PALLET CONFIGURATION:	12 layers of 12 = 144
PALLET TYPE	CHEP Blue Four-Way

### STOCK NUMBERS:

CARTON:	92294
OUTER:	730541 TYPHOO (Supplier Code)

PACKAGING MATERIAL	MATERIAL DESCRIPTION	AVG WEIGHT (g)	EPR LAYER
Filter paper	A lightweight, plain, multi-phase, heat sealable tissue comprised of a special blend of technical polymer fibers, abaca, and other selected cellulosic fibers	0.16 (per bag)	Primary
Carton	400 micron coated folding board FSC	25	Primary
Outer case	Board Grade: 150WK/T 127 SC Fluting: M Flute Recycled Content: 64%	188	Secondary
Shrink	PE FILM	466	Secondary
Pallet Label	ECO Direct Thermal Paper	1.4	Secondary

