



PACKAGING SPECIFICATION TYPHOO 80 PREMIUM (x6)

DOC REF: TR80289 // S30620

Date: Jul 2025

Page(s) - 1 of 3

Issued by: Typhoo T&I

Reason for change:
Rebranding

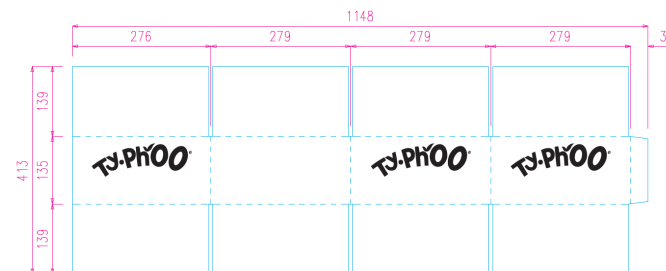
PRODUCT INFORMATION:

CSN:	TR80289
S-CODE:	S30620
DESCRIPTION:	TYPHOO 80 PREMIUM (x6)
SINGLE UNIT NET WEIGHT:	250g (3.125g fill weight)
SINGLE UNIT DIMENSIONS:	L 136mm x W 88mm x H 125mm
SINGLE UNIT GROSS WEIGHT:	299.5g
SHELF LIFE:	Carton BBE Dual code 36 Months: Julian / Outer Production Code BBE Code: 36 MONTHS : Julian
OUTER BARCODE:	ITF: 15055486000596
PACK BARCODE:	EAN: 5060123602258

SINGLE UNIT RENDER:



OUTER ARTWORK:





PACKAGING SPECIFICATION TYPHOO 80 PREMIUM (x6)

DOC REF: TR80289 // S30620

Date: Jul 2025

Page(s) - 2 of 3

Issued by: Typhoo T&I

Reason for change:
Rebranding

PACKING METHOD:

80 TEABAGS PER CARTON FRONT FACE AND SEALED WITH ADHESIVE. 6 CARTONS PER SRP AND SEALED WITH ADHESIVE. STRETCHWRAP PLUS 1 PALLET LABEL.

OUTER & PALLET:

OUTER NET WEIGHT:	1.500kg
OUTER GROSS WEIGHT:	1.985kg
OUTER DIMENSIONS:	L 279mm x W 276mm x H 135mm
PALLET NET WEIGHT:	216kg
PALLET GROSS WEIGHT:	313.9kg (including CHEP)
LOADED PALLET DIMENSIONS:	L 1200 mm x W 1000 mm X H 1758mm
PALLET CONFIGURATION:	12 layers of 12 = 144
PALLET TYPE	CHEP Blue Four-Way

STOCK NUMBERS:

CARTON:	92268
OUTER:	730541 TYPHOO (Supplier Code)

PACKAGING MATERIAL	MATERIAL DESCRIPTION	AVG WEIGHT (g)	EPR LAYER
Filter paper	A lightweight, plain, multi-phase, heat sealable tissue comprised of a special blend of technical polymer fibers, abaca, and other selected cellulosic fibers	0.16 (per bag)	Primary
Carton	400 micron coated folding board FSC	25	Primary
Outer case	Board Grade: 150WK/T 127 SC Fluting: M Flute Recycled Content: 64%	188	Secondary
Shrink	PE FILM	466	Secondary
Pallet Label	ECO Direct Thermal Paper	1.4	Secondary



PACKAGING SPECIFICATION TYPHOO 80 PREMIUM (x6)

DOC REF: TR80289 // S30620

Date: Jul 2025

Page(s) - 3 of 3

Issued by: Typhoo T&I

Reason for change:
Rebranding

