



PACKAGING SPECIFICATION TYPHOO 100 ONE CUP (x24)

DOC REF: TB10006 // S30601

Date: Jul 2025

Page(s) - 1 of 3

Issued by: Typhoo T&I

Reason for change:
Rebranding

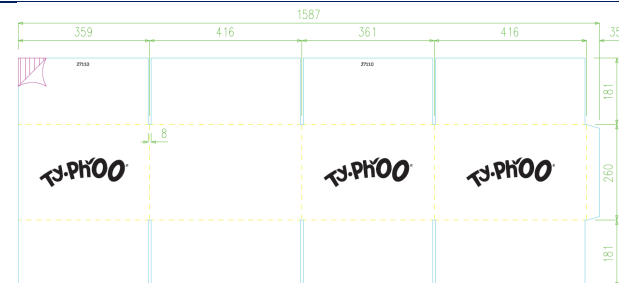
PRODUCT INFORMATION:

CSN:	TR10006
S-CODE:	S30601
DESCRIPTION:	TYPHOO 100 ONE CUP (x24)
SINGLE UNIT NET WEIGHT:	200g (2g fill weight)
SINGLE UNIT DIMENSIONS:	L 136mm x W 88mm x H 125mm
SINGLE UNIT GROSS WEIGHT:	241.5g
SHELF LIFE:	Carton BBE Dual code 36 Months: Julian / Outer Production Code BBE Code: 36 MONTHS : Julian
OUTER BARCODE:	ITF: 15060123601371
PACK BARCODE:	EAN: 5060123602128

SINGLE UNIT RENDER:



OUTER ARTWORK:





PACKAGING SPECIFICATION TYPHOO 100 ONE CUP (x24)

DOC REF: TB10006 // S30601

Date: Jul 2025

Page(s) - 2 of 3

Issued by: Typhoo T&I

Reason for change:
Rebranding

PACKING METHOD:

100 TEABAGS PER CARTON FRONT FACE AND SEALED WITH ADHESIVE. 24 CARTONS PER SRP AND SEALED WITH ADHESIVE. STRETCHWRAP PLUS 1 PALLET LABEL.

OUTER & PALLET:

OUTER NET WEIGHT:	4.800kg
OUTER GROSS WEIGHT:	6.065kg
OUTER DIMENSIONS:	L 416mm x W 359mm x H 260mm
PALLET NET WEIGHT:	144kg
PALLET GROSS WEIGHT:	210kg (Including CHEP)
LOADED PALLET DIMENSIONS:	L 1000mm x W 1200mm X H 1462mm
PALLET CONFIGURATION:	5 layers of 6 = 30
PALLET TYPE	CHEP Blue Four-Way

STOCK NUMBERS:

CARTON:	92274
OUTER:	27110

PACKAGING MATERIAL	MATERIAL DESCRIPTION	AVG WEIGHT (g)	EPR LAYER
Filter paper	A lightweight, plain, multi-phase, heat sealable tissue comprised of a special blend of technical polymer fibers, abaca, and other selected cellulosic fibers	0.16 (per bag)	Primary
Carton	400 micron coated folding board FSC	25	Primary
Outer case	Board Grade: 150WK/T 127 SC Fluting: M Flute Recycled Content: 64%	269	Secondary
Shrink	PE FILM	466	Secondary
Pallet Label	ECO Direct Thermal Paper	1.4	Secondary



PACKAGING SPECIFICATION TYPHOO 100 ONE CUP (x24)

DOC REF: TB10006 // S30601

Date: Jul 2025

Page(s) - 3 of 3

Issued by: Typhoo T&I

Reason for change:
Rebranding

